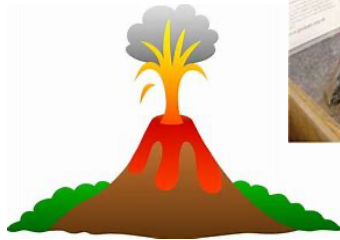


## Puddlebridge Class Homework Projects Year 4 – Spring Term 2022

In order to support and enrich our learning in class, each child should choose one of the activities below linked to our work in Science (The Human Digestive System) or Geography (Extreme Earth). Once completed this should be brought into school where it will be shared with the class. Children may prefer to use ideas of their own, or even wish to complete more than one of the activities below – we are very happy for the children to be as creative as they wish! Please make sure that work is completed and brought into school by Wednesday 9<sup>th</sup> February at the latest.

Make a model volcano. Can you make it erupt?



Find out about a natural disaster – perhaps a volcanic eruption, an earthquake or a tsunami. Write a report about what happened. You could present this as a newspaper report.



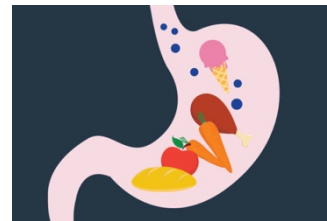
Use your artistic skills to create a picture of a volcano – you could draw or paint, or even make a collage.



Create a model of the human digestive system using a variety of objects.



Write a recount imagining you are a piece of food travelling through the digestive system. What happened to you? What was it like?



Create an informative poster explaining the importance of good dental hygiene.

